

# Acrobat® SC

Fungicide

FACT SHEET

## A different mode of action for defeating downy mildew

Acrobat is a product of choice to control downy mildew in several crops, including lettuce, onions and cucurbits. For potato growers, it offers the advantage of controlling both early and late blight when mixed according to the label. In other crops, Acrobat delivers excellent, cost-effective fungal disease protection. Including its distinctive Group 40 mode of action in preventive spray programs strengthens resistance management.



- Effective against strains of downy mildew with Group 4 (metalaxyl) resistance.
- One of the few reliable options registered for both early and late blight in potatoes when mixed according to the label.
- Active on both the germination and sporulation stages of downy mildew.
- Can be used late in the spray program in cucurbits and onions.

### Application method

Ground spray only, always in tank-mixes with Polyram® DF or mancozeb and a non-ionic surfactant at label rates.

Grapevines can be treated by dilute or concentrate spraying.

### Harvest WHPs

Cucurbits, onions: 7 days

Lettuce, potatoes: 14 days

Grapevines: 28 days

Wine Grapes: As per AWRI Dog

Book, use no later than 80% capfall

Oilseed poppies: 42 days

### Crops and diseases controlled

#### Cucurbits

Downy mildew\*, Alternaria leaf spot, Anthracnose, Gummy stem blight, Septoria spot (in pumpkins)\*

#### Grapevines & Oilseed poppies

Downy mildew

#### Lettuce (head varieties only)

Downy mildew, Anthracnose, Septoria leaf spot

**Onions** Downy mildew, Purple blotch\*

**Potatoes** Early blight, Late blight

\*Refer to label for regional restrictions

For more information on Acrobat SC, visit [crop-solutions.basf.com.au](http://crop-solutions.basf.com.au) or contact your local BASF representative on **1800 558 399**

**BASF**  
We create chemistry

# Acrobat® SC

## Fungicide

### How and when to apply Acrobat

<b>Rates</b>	<b>Cucurbits</b>	360 mL/ha + Polyram or mancozeb
	<b>Lettuce</b> (head varieties only)	360 mL/ha + Polyram or mancozeb
	<b>Grapevines</b> (dilute spraying)*	36 mL/ha + Polyram or mancozeb
	<b>Oilseed poppies</b>	360 mL/ha + mancozeb
	<b>Onions</b>	360 mL/ha + mancozeb
	<b>Potatoes</b>	360 mL/ha + Polyram or mancozeb

Apply the same total amount of product to the target crop whether using dilute or concentrate spraying methods.

\* Do not use in crops intended for drying.

### Method

Always tank-mix Acrobat with Polyram or mancozeb at label rates and add a non-ionic surfactant at the label rate.

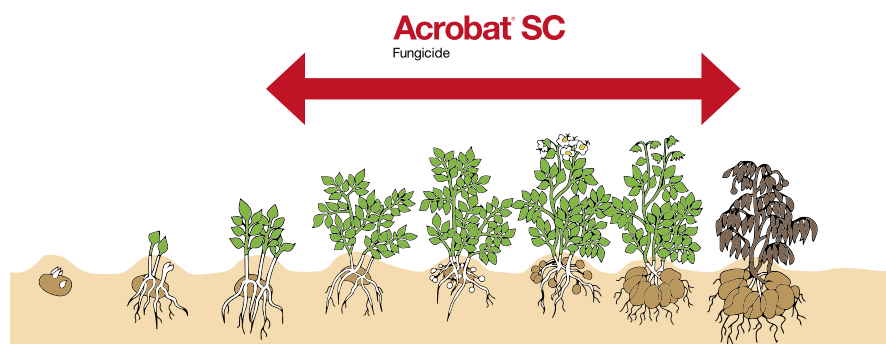
Apply in 250–500 L/ha water to ensure thorough coverage of foliage.

For dilute spray application in grapevines, apply in high volumes of water to the point of run-off. Application volumes will vary as the crop grows and the canopy develops.

### Timing

Maintain a regular protectant spray program. Consecutive sprays applied 7–10 or 14 days apart are recommended for various crops, as per the label. Use the shorter spray interval when the risk of infection is high.

### Application timing in potatoes



In potatoes, Acrobat can be applied up to four times each season and up until 14 days before harvest as part of a preventative spray program.

### Resistance management

Acrobat is a Group 40 fungicide. Acrobat should be used in rotation with other fungicides that have a different mode of action to help slow the development and spread of resistant pathogens. Follow the label guidelines for the maximum number of consecutive applications and total Acrobat sprays on each crop.

For more information on Acrobat, visit [crop-solutions.basf.com.au](http://crop-solutions.basf.com.au) or contact your local BASF representative on **1800 558 399**

### ALWAYS READ AND FOLLOW LABEL DIRECTIONS BEFORE USING ANY PRODUCT IN THIS FACT SHEET.

This fact sheet is intended as general advice. Disclaimer: The information submitted in this publication is based on current BASF knowledge and experience. In view of the many factors that may affect its application, this data does not relieve the user from carrying out their own tests. The data does not imply assurance of certain properties or of suitability for a specific purpose. It is the responsibility of the user to ensure that any proprietary rights and existing laws and legislation are observed.

