

Luximax[®]

Herbicide

GROWER
GUIDE

Your wheat deserves a proper break



Stay one step
ahead of
annual ryegrass

 **BASF**

We create chemistry

Luximax[®]

Herbicide

“Give it a go, because it’s a new chemical group and we’ve got to keep rotating our chemistry to fight resistance”

Rob Byrne
Byrneville, Vic

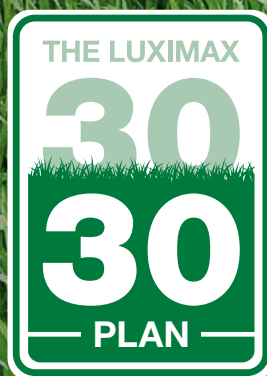


Hear more from growers and advisors who are giving their wheat paddocks a break with Group 30 chemistry.

Stay one step ahead of annual ryegrass

Recharge your pre-em rotation by using Luximax’s Group 30 chemistry on 30% of your wheat crop every season to:

- Maintain the highest levels of grass-weed control
- Reduce resistance pressure on older products
- Keep Group 3, 13 & 15 products in the program

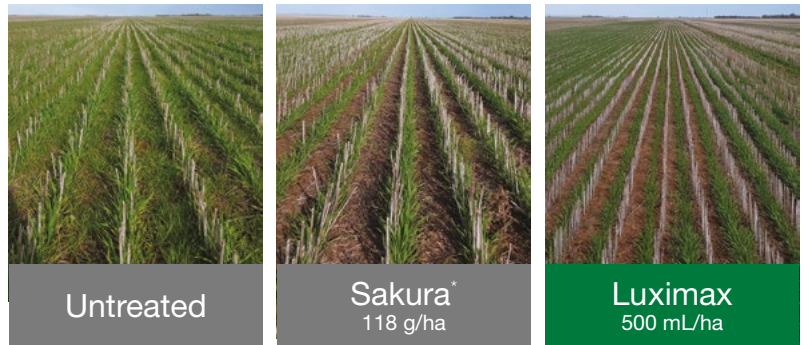


Keep maximum annual ryegrass control

Luximax® herbicide is a breakthrough in annual ryegrass control in wheat (not durum), delivering the first unique mode of action in a generation and matching industry standards for control of annual ryegrass populations, including known biotypes resistant to existing herbicide modes of action.

Effective control

- A unique mode of action for pre-emergent grass weed control
- High level control of annual ryegrass, barley grass, silver grass & toad rush
- Control of ARG populations with known resistance to any other mode of action
- Up to 12 weeks' residual control, matching the highest industry standard



Demo site 44 DAT July 10/2019 – Horsham, Vic. Images courtesy of Josh Mahns.

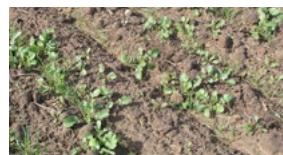
| | | | |
|--------------------------|------------------------------------|---------------------|---|
| Active ingredient | Cinmethylin 750 g/L | Target weeds | Control: Annual ryegrass, barley grass, silver grass & toad rush |
| Mode of action | Group 30 (Cineole – FAT inhibitor) | | Suppression: Brome grass, wild oats |
| Formulation | Emulsifiable concentrate (EC) | | |
| Pack size | 20 L, 110 L | WHPs | Grazing: Do not graze or cut for stock food for 7 weeks |
| Crop | Wheat (not durum) | | Harvest: Not required when used as directed |

Application guidelines

| Rate | Spray set-up | Sowing depth | IBS method |
|-------------------------------------|---|--|------------------------------------|
| 500 mL in 70–150L water per hectare | Air induction nozzles delivering MEDIUM spray quality | Ensure clear separation between the treated band and seed with a minimum sowing depth of 3cm from the bottom of the furrow | Knife points and press wheels ONLY |



Avoid excessive stubble cover (<50%)



Knock down existing weeds



Minimise clods and ridges

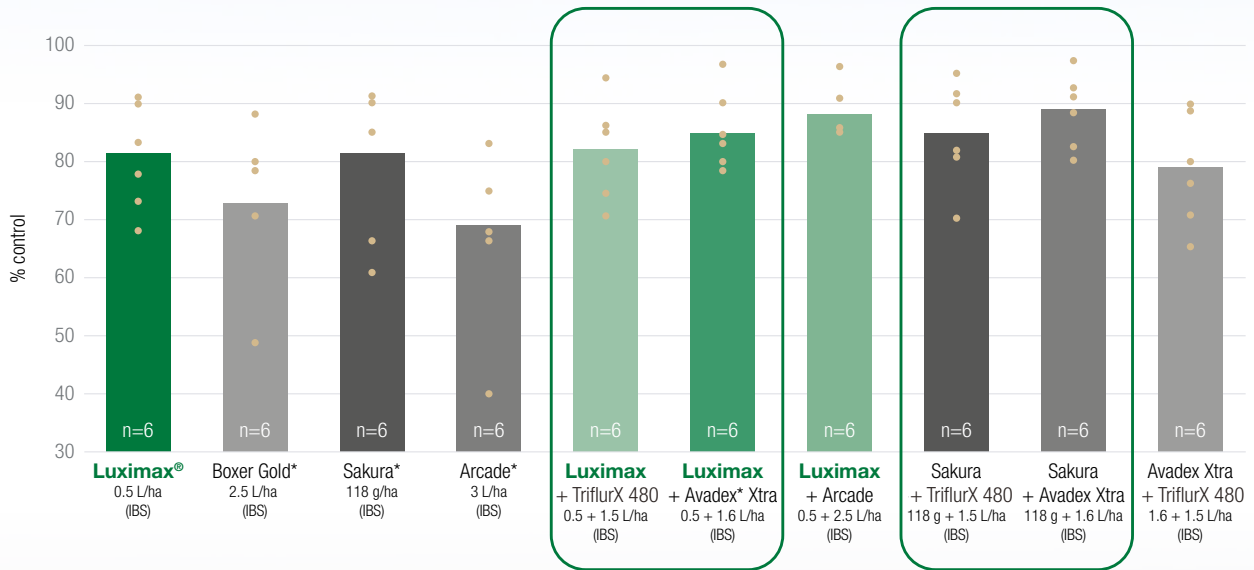


Adequate rainfall within 7-10 days after application (DAA) is ideal



For a quick check of the application essentials, watch all three very short application videos by scanning this code.

Efficacy of solo and mixtures of pre-emergent herbicides on annual ryegrass in wheat



2018 Trials AU-ASA-034; AU-ASV-MM1; AU-AUO-F02; AU-AWS-655; AU-AWS-422 & AU-AWS-423. Assessments conducted 9–14 WAA. * Registered trademarks. Dots represent efficacy recordings of individual trials. Bars show the mean average.

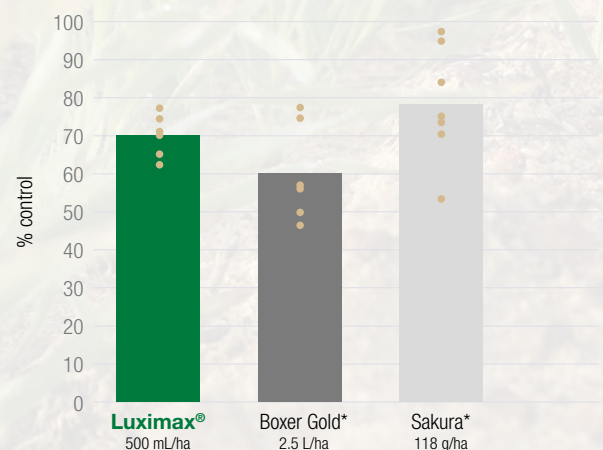
Annual ryegrass control

equivalent to or better than industry standards



Wild oats suppression

Luximax provided good levels of suppression comparable to industry standards



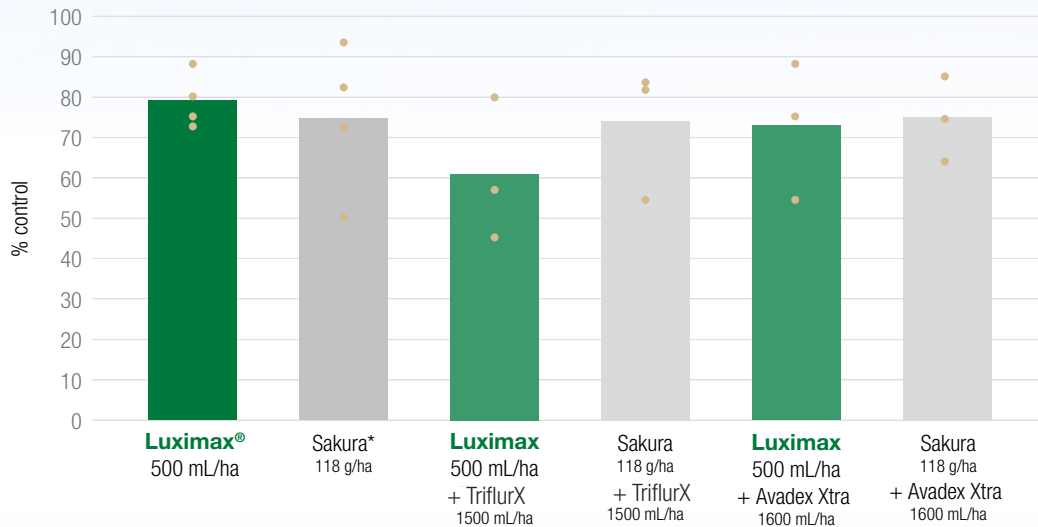
Mean results of seven BASF 2018 trials - six 3-way trials; one excluding Boxer Gold: DEV-H-2015-AX-331-A-03.0-AU-ASV-MM1, DEV-H-2016-AX-340-A-02.0-AU-AUO-AS1, DEV-H-2016-AX-340-A-02.0-AU-AUO-AS2, DEV-H-2017-AU-120-A-01.0-AU-ASA-094, DEV-H-2017-AU-120-B-02.0-AU-AAO-AS1, SEL-H-2014-ZX-235-A-02.0-AU-AAU-PW1, SEL-H-2014-ZX-235-A-02.0-AU-AAU-PW3. All treatments applied IBS. Average assessment timing 12 weeks after treatment. * Registered trademarks.

Dots represent efficacy recordings of individual trials. Bars show the mean average.

Demo site, Pinnaroo SA, Sown on 11/05, Photo taken 09/07, 2019, 59 DAT
*Registered trademark Photo: Garry Arbon

Barley grass control – equivalent to industry standards

All treatments significantly decreased barley grass populations compared to the untreated control. In all four trials there was no significant difference in control between Luximax and Sakura.

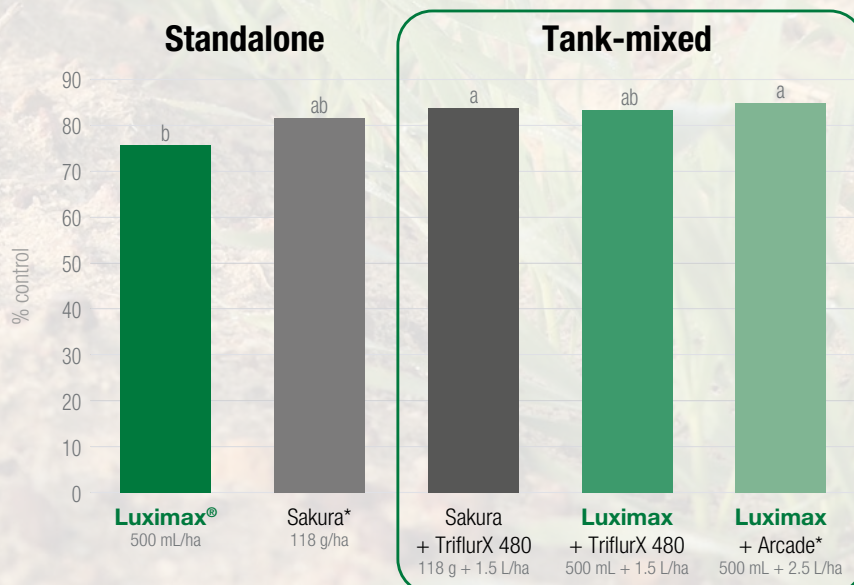


2017–2019, 4 trials: H17120A-ASN429, H18130A-ANV001, DEV-H-2018-AU-130-A-02.0 AGX18034, DEV-H-2019-AUY-130-A-01.0 KA19-0843. Assessments conducted at 63–91 DAT. * Registered Trademarks. Dots represent efficacy recordings of individual trials. Bars show the mean average.

Brome grass suppression

Like the other leading pre-emergent products, Luximax can deliver strong results on brome grass in favourable conditions.

Tank-mixing Luximax improved levels of brome grass suppression.



Mean results of two 2018 trials. All treatments applied IBS. Assessments conducted at 8–12 weeks after treatment. * Registered trademarks

Luximax[®]

Herbicide

The first new mode of action for ryegrass control in a generation

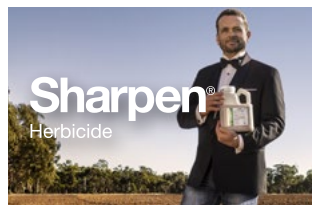
Add Luximax to pre-emergent programs to strengthen the whole rotation.

- ✓ **Improved sustainability** through a unique mode and site of action with no cross-resistance
- ✓ **Matches industry standards** for level and length of control
- ✓ **Added flexibility** with short plantback intervals plus an extra MoA in the rotation

Find out more about Luximax and some of our other great products at crop-solutions.basf.com or contact your local BASF representative on **1800 558 399**



Complete your pre-plant BLW weed control



Strategic broadleaf weed control



Foliar disease protection in wheat & barley

ALWAYS READ AND FOLLOW LABEL DIRECTIONS.

This brochure is intended as general advice. The information it contains is based on current BASF knowledge and experience. In view of the many factors that may affect its application, this data does not relieve the user from carrying out their own tests. The data does not imply assurance of certain properties or of suitability for a specific purpose. It is the responsibility of the user to ensure that any proprietary rights and existing laws and legislation are observed.

© Copyright BASF 2022 ® Registered trademark of BASF. * Registered trademark. 212742 10.2022

 **BASF**
We create chemistry

**WEED
smart**
every weed every seed
every farm every year

